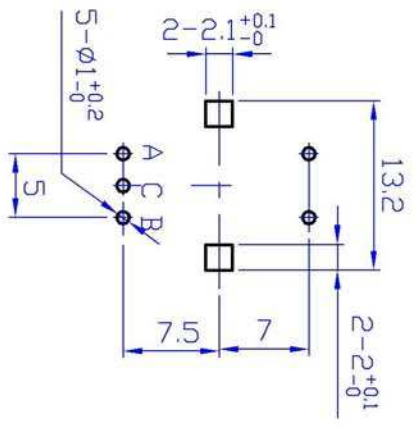
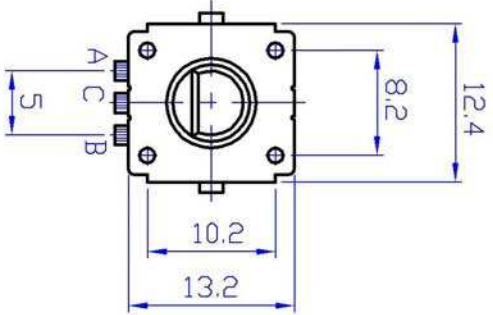


L	20	25	30
A	7	12	12



Mounting hole detail

编码器规格书

ENCODERS SPECIFICATIONS

适用型号 : ED12 系列
 APPLICABLE MODELS: ED12 Series

一 构造 CONSTRUCTION

形状,寸法,依照图面规定

外观 各部应良好无锈蚀、裂痕、电镀不良现象
 APPEARANCE: EVRY PART SHOULD BE FINISHED NOT TO EXIST RUST
 FLAW CRACK AND PLATING

二 机械的性能(Mechanical characteristics)

ITEMS	SPECIFICATION
全回转角度: Total rotational angle	360°
回转力度: Rotational torque	3~20mN.m 30~200gf.cm
轴押引强度: Push-pull strength	50N/5.1Kgf max
C.C.位置: Click position	<input type="checkbox"/> 0 <input type="checkbox"/> 12 <input type="checkbox"/> 24 detent

三 电气的性能 (Electrical characteristics)

ITEMS	SPECIFICATION
定格电力: Ratings	5V DC.0.5mA
最高使用电流: Maximum operating voltage	5mA
绝缘抵抗: Insulation resistance	100MΩ min. at 50V DC
耐电压: Voltage proof	50V AC

滑动杂音:
Slider noise (突跳 Bounca)

$t1, t3 \leq 3ms$
 $t2 \leq 2ms$ (测定条件:回转速度 360° /s Test conditions 360° /s)

输出信号和回转方向:
Output signal and Rotational direction

A signal

B signal

四 开关性能 (Push-on switch specifications)

开关回路: Switch circuit	单极单投 single pole and single throw(push on)
开关移动量: (mm) Travel of switch	0.5 ^{+0.4} _{-0.3}
开关作动力: Operating force of switch	3 ^{+1.5} _{-1.0} N/300 ⁺¹⁵⁰ ₋₁₀₀ gf
定格电力: Ratings	DC5V 10mA(最小定格 DC5V 1mA) (minimum ratings DC 5V 1mA)
接触抵抗: Contact resistance	初期 100mΩ 寿命后 200 mΩ first period:100mΩ ,200mΩ after the end of useful life is reached
负荷寿命特性: Operating life	20,000 cycles min.

	制作 Approved	审核 Examine	核准 Approve